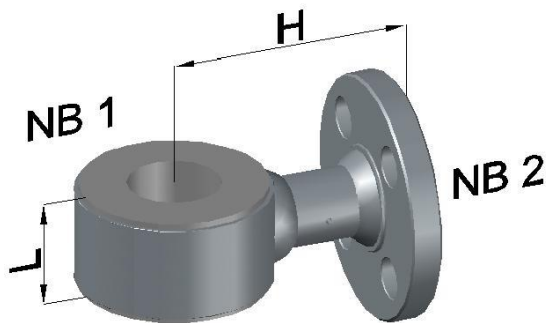


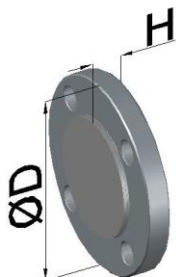
LINED INSTR TEE & BLIND FLANGE

INSTRUMENT TEE



Picture for illustration only, type of steel fabrication varies

BLIND FLANGE



NB #150	D mm	H mm	Wt kg
½"	89	16	0.3
¾"	98	18	0.5
1"	108	19	0.9
1½"	127	20	1.3
2"	152	24	2.4
3"	190	29	4.9
4"	229	29	6.9
6"	279	30	11
8"	343	34	19
10"	406	36	28
12"	482	38	45

NB1 #150	NB2 #150	L mm	H mm	Wt kg
1"	½"	50	89	1.9
1"	¾"	50	89	1.9
1"	1"	50	89	2.0
1½"	½"	50	102	2.7
1½"	¾"	50	102	2.8
1½"	1"	50	102	3.0
1½"	1½"	75	102	4.6
2"	½"	50	114	4.7
2"	¾"	50	114	4.8
2"	1"	50	114	5.0
2"	1½"	75	114	8.4
2"	2"	90	114	9.9
3"	½"	50	140	5.7
3"	¾"	50	140	5.8
3"	1"	50	140	6.0
3"	1½"	75	140	11
3"	2"	90	140	12
3"	3"	150	140	20
4"	½"	50	165	6.7
4"	¾"	50	165	6.8
4"	1"	50	165	7.0
4"	1½"	75	165	12
4"	2"	90	165	13
6"	½"	50	203	8.9
6"	¾"	50	203	9.0
6"	1"	50	203	10
6"	1½"	75	203	15
6"	2"	90	203	16
8"	½"	50	229	10
8"	¾"	50	229	10
8"	1"	50	229	10
8"	1½"	75	229	16
8"	2"	90	229	17
10"	1"	50	279	24
10"	1½"	75	279	26
10"	2"	90	279	27
12"	1"	50	305	29
12"	1½"	75	305	30
12"	2"	90	305	30